

# PORTABLE POWER STATION

## PURE SINE WAVE INVERTER

BUILT-IN LiFePO4 LITHIUM ION BATTERY



# PORTABLE POWER STATION

## DE1000 SERIES



### FEATURES



**OUTPUT**  
High capacity  
1000W Output.



**PURE SINE WAVE**  
Identical to household power.  
Will not damage electrical  
equipment.



**CHARGING OPTIONS**  
11 Output Ports accommodates multiple  
devices.



**HD SCREEN**  
Smart LCD Touch Screen Display.

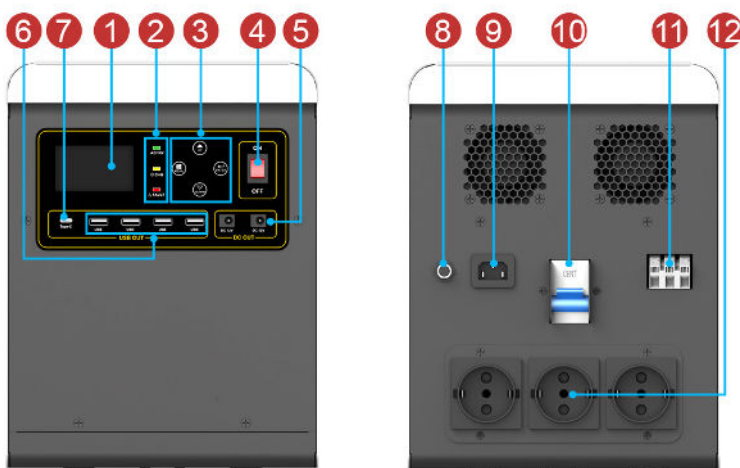
### PURE SINE WAVE INVERTER

DE1000 series is a pure sine wave inverter suitable for powering TVs, stereos, laptops, desktop computers and other home appliances.

It will automatically switch to inverter and provide power when AC is interrupted unexpectedly. It includes a built in 4 series LiFePO4 1.2kWh battery.



### Input & Output Ports



1. LCD Screen
2. LED Light
3. Operation button
4. Power Switch
5. DC12V/10A output(5521) ×2pcs
6. USB-A 5V ×4pcs
7. USB TypeC (PD 18W)
8. Charger input protect
9. AC input
10. Input breaker
11. PV input
12. AC output ×3pcs

# PORTABLE POWER STATION

## DE1000 SERIES



### SPECIFICATION

#### MODEL

#### DE1000 OS

	Nominal Battery System Voltage	12VDC	
INVERTER OUTPUT	Rated power	1000W	
	Output voltage waveform	Pure Sine Wave	
	Output voltage regulation	230V $\pm$ 5%	
	Output frequency	50Hz / 60Hz ( $\pm$ 0.2Hz)	
	Peak efficiency	90%	
	Nominal DC input voltage	12V ( $\pm$ 0.3)	
	Standby Consumption	< 25W	
PV Input	Max solar power input	900W	
	PV max charging current	60A ( $\pm$ 3A)	
	Combined charging current	70A ( $\pm$ 4A)	
	Max efficiency	98.0% max	
	PV array open circuit voltage	105VDC	
	PV Array MPPT Voltage Range	15~105V	
AC Input	AC input voltage	230Vac $\pm$ 5%	
	Acceptable input voltage range	90-280VAC	
	Nominal input frequency	50Hz / 60Hz (Auto detection)	
	Transfer time	10ms typical (UPS, VDE); 20ms typical (APL)	
AC Charge	Charging current @ Nominal input voltage	10/20A ( $\pm$ 4A)	
	Charging Algorithm	4-step (Li)	
Output	AC output	230Vac (Socket *4pcs)	
	USB TypeC	PD 18W	
	USB-A 5V	DC output*4pcs	
Lithium Battery	Energy	1280Wh	
	Nominal voltage	12.8V	
	Battery capacity	100Ah	
	Protection board	100A	
	Standard charging & discharge current	50A	
	Operation temperature	Charge	0°C to 45°C
		Discharge	-10°C to 60°C

**Johannesburg:** Unit 4, Cambridge West, Cambridge Commercial Park, Witkoppen Road, Paulshof • Tel: + 27 (0) 11 646 5250

**Cape Town:** Unit 29, Creation Park, 2 Computer Rd, Montague Gardens (Marconi Beam) 7441 • Tel: + 27 (0) 21 761 4525